

**Technical data**  
**The Groteska Theatre – Hall Theater**

**Stage location:** 1 floor  
**Auditorium:** 276 seats, additional seats : 18  
**Stage area:** 70m<sup>2</sup>  
**Proscenium opening:** height 4,10m, width 5,94m  
**Stage depth from the proscenium :** 10,42m  
**Stage height from the floor to the upper limit of pipes :** 9,20m  
**Electric lifts (working loud!) Not used during the performance**  
**Drapes :** black  
**Floor :** wooden, black  
**Ballet floor :** black/grey/ gray 60 m<sup>2</sup> [ 6m x 10 m]  
**Drop :** black / white – 7 x 6 m\h  
**Dimensional limitations for stage design components**

- 1- door 2 m X 2 m
- 2- door 1 m X 2.7 m
- 3- component length to 4.3 m

**Ladies dressing room:** 30m<sup>2</sup>  
**Gentlemen dressing room :** 44m<sup>2</sup>  
**Air condition:** no  
**Disabled access:** no  
**Car park:** no  
**Eating place - cafe -100m<sup>2</sup>**  
[on the grand floor, receptions possible]  
**Costume rental:** no  
**Passenger lift:** no  
**Service lift:** no



## HALL THEATRE - EQUIPMENT

### Sound

<b>DEVICE, EQUIPMENT</b>		<b>NUMBER</b>	<b>NOTES, COMMENTS</b>
<b>MIXING CONSOLE</b>			
Allen&Heath GL 2800		1	Analog console
Allen&Heath iLive T-112 + Mixrack iDR-48		1	Digital console
Yamaha DM1000		1	Digital console
<b>SYSTEM FRONT</b>			
DBX DriveRack 260		1	Speaker processor
	Power Amplifier Chip Q4 Audio DPI 20	3	
	A set of passive EAW serii AX	4 + 2	
	Power Amplifier Chip Crown XLS202	1	Auxiliary speakers under the balcony
	Speaker HK Audio PR:O 8	2	
<b>MONITORING SYSTEM</b>			
Active Monitor Mackie SRM350		4	
Active Monitor Zeck VECTOR T3A		2	
Power Amplifier Crown XLS202		1	Sidefill
Speaker 200W RMS		2	
Power Amplifier Phonic MAR4		1	In the back of the stage
Speaker Dynacord 200W RMS		2	
Sennheiser ew 300 IEM G3		8	The ear

<b>MICROPHONES</b>		
Audio-Technica AEW-T5400	8	Wireless, CONDENSER MICROPHONES
Audio-Technica AEW-T4100a	8	Wireless, dynamic
Audio-Technica AEW-T1000 + BP892	10	Microphones headworn
Sennheiser ew 100	2	Wireless, dynamic
Shure SM58	5	
Shure SM57	2	
Audio-Technica ATM250DE	1	Microphone two membrane
Røde NT4	1	Microphone two membrane
Røde NT5	2	
Rduch MPSw	2	
<b>SOUND PLAYERS</b>		
Tascam MD-CD1mkII	2	Player MD/CD
Tascam MD-CD1mkIII	2	Player MD/CD
Denon DN-C635	1	Player CD
<b>PERIPHERY</b>		
Lexicon ALEX	1	Reverb processor
Klark-Teknik SQUARE ONE Dynamics	1	8-channel compressor
Tapco SQUEEZ SQ2	1	2-channel compressor
Di-Box	9	
Microphone stand long	7	
Microphone stand short	1	
Orchestral Stand	6	

### Multimedia

<b>DEVICE, EQUIPMENT</b>	<b>NUMBER</b>	<b>NOTES, COMMENTS</b>
Projector DLP Panasonic PT-D5500	3	Multimedia equipment for use by certified consent of the Director of Theatre
Projector LCD Sanyo PLC-XF47	2	
Lens Sanyo LNS-S02Z	2	
Lens Sanyo LNS-W03	1	
Lens Sanyo LNS-W02Z	2	
Lens Panasonic [0,8:1]	3	
Lens Panasonic [2,5:1]	3	
Video mixer Edirol V-4	3	
DVD player Pioneer	4	
ArKaos Media Server	1	
Screen [cotton] for front projection 1,85m/h x 2,77m	2	
Ekran [cotton] do projekcji przedniej 2,25m/h x 3,00m	1	
Screen [cotton] for front projection 1,65m/h x 2,27m	1	
Screen [cotton] for front projection / for rear projection 1,50m/h x 1,77m	1	

## Lighting

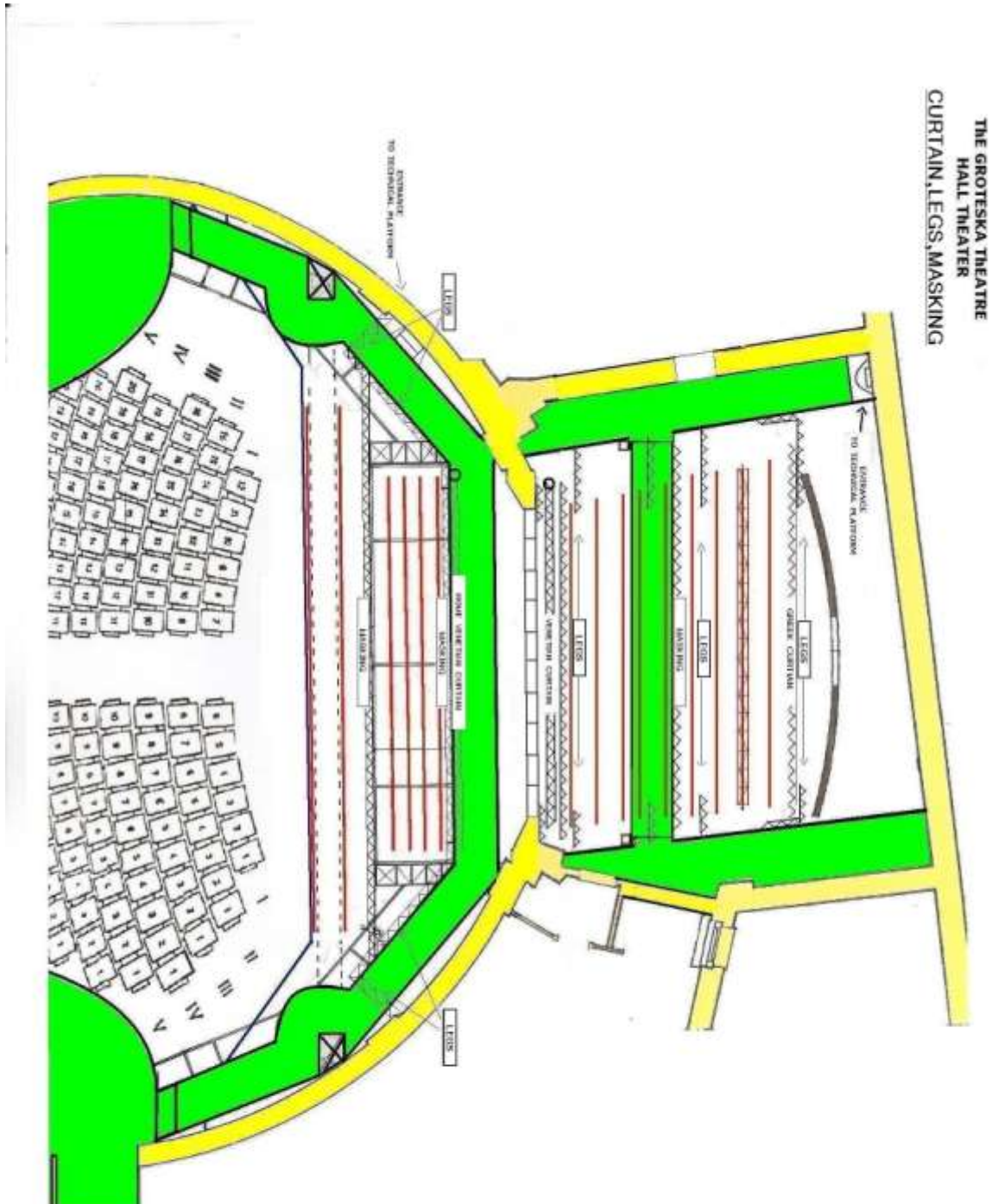
<b>DEVICE, EQUIPMENT</b>	<b>NUMBER</b>	<b>NOTES, COMMENTS</b>
MAC 2000 PF Martin, 1200W, pan540°, tilt 267°, zoom 10-28°,	6	
MAC 550 Martin, 400 W, pan 540°, tilt 246°, zoom 14°-30°	2	
MAC 600 Martin, 575 W, pan 440°, tilt 306°,	6	
MAC TW-1 WASH	4	
WARP 800 W	6	
ADB 1200 profil	4	
RBV 1000 W profil	10	
Colmar stagelite LED	4	
RBV PC 1000 W	6	
ADB 500 W PC	16	
RBV 650 W PC	8	
PAR 64 1000 W	6	
ETC 575W JUNIOR	6	
PAR LED RGB 30 W	10	
PAR LED RGBW 30W	6	
Foodlight 400 W	6	
Foodlight 1000 W	4	
mixing console SPARK 4D	1	
mixing console LCS 420	1	
mixing console CHAMSYS MAGIC Q MQ 100 PRO	1	
Expansion MAGIC Q PLAYBACK WING	1	
TOUCH SCREEN MONITOR ELO 1715L		
<b>DIMERS</b>	120	
Smoke machine	1	
Bubble machine	1	
Hazer Unique 2DMX 512 (UNDU)	1	



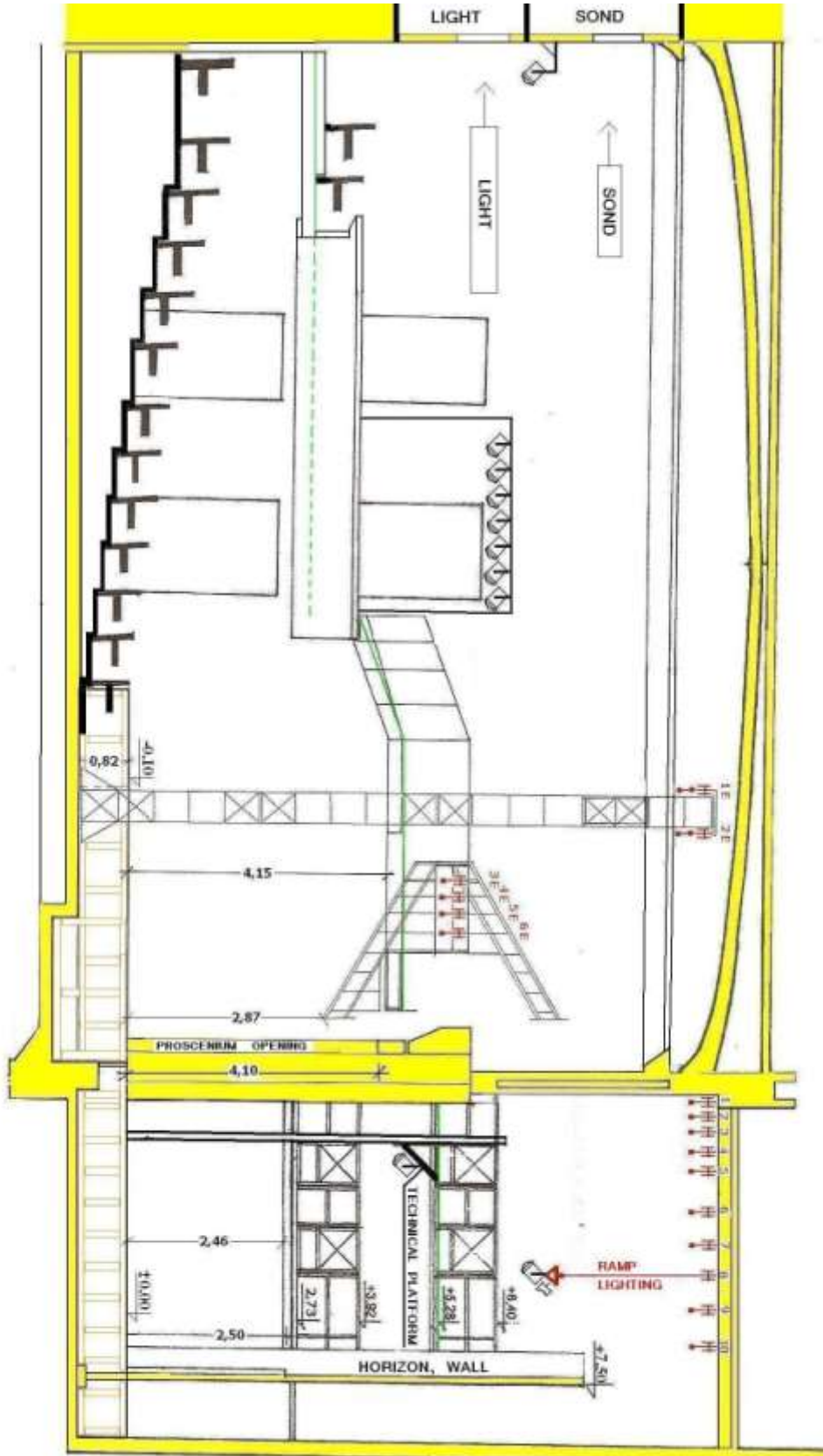
TEATR GROTESKA  
ul. SKARBOWA 2  
31 – 121 KRAKÓW  
TEL. 12 633 48 22  
[groteska@groteska.pl](mailto:groteska@groteska.pl)  
[www.groteska.pl](http://www.groteska.pl)  
Update 05.05.2014

Spliter PRX 6 channels .	3	
Spliter Martin 4 <b>Channel.</b>	1	



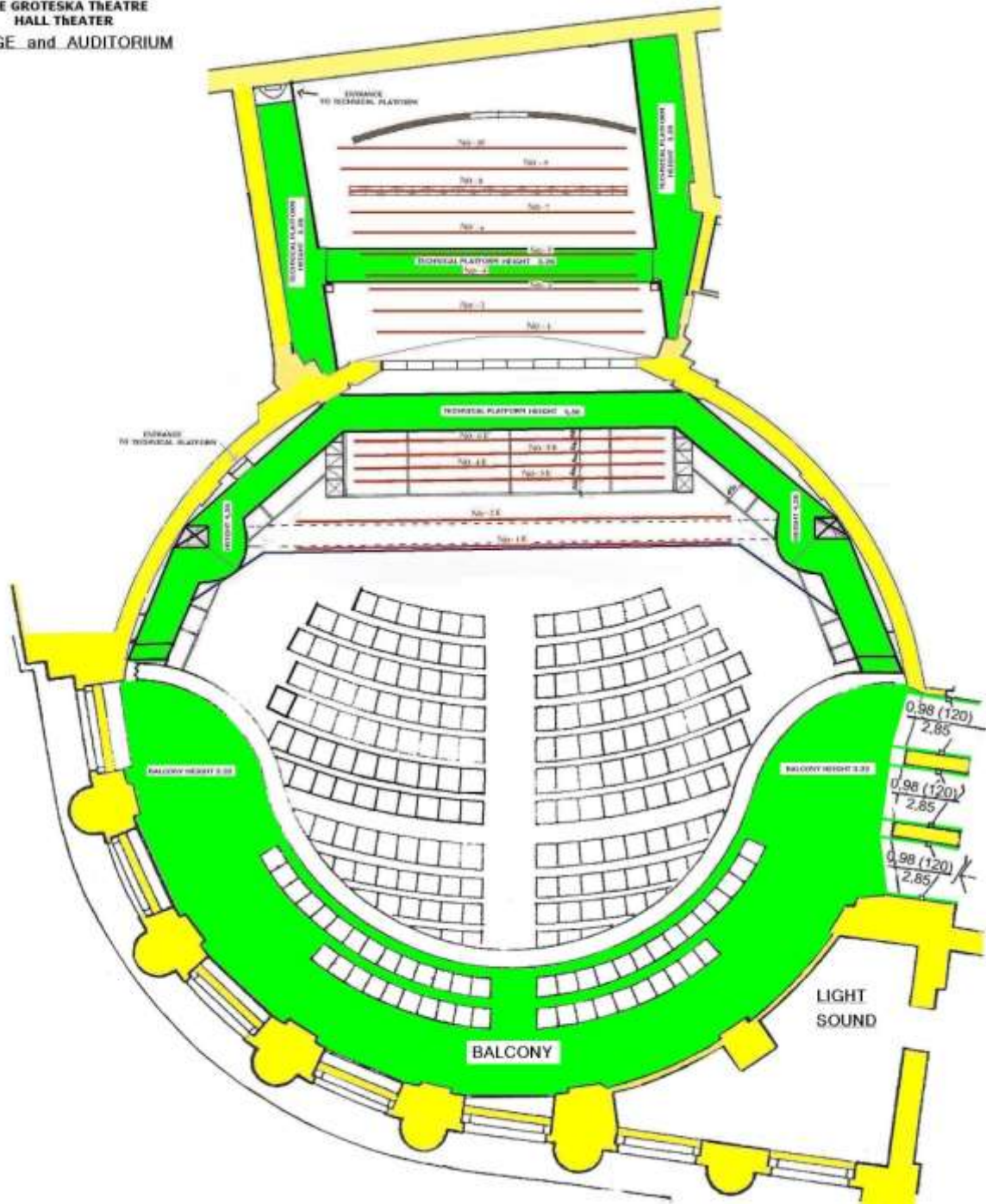








**THE GROTESKA THEATRE  
 HALL THEATER  
 STAGE and AUDITORIUM**





TEATR GROTESKA  
ul. SKARBOWA 2  
31 – 121 KRAKÓW  
TEL. 12 633 48 22  
[groteska@groteska.pl](mailto:groteska@groteska.pl)  
[www.groteska.pl](http://www.groteska.pl)  
Update 05.05.2014